



Toy Design

Sylvia Wang



Play Exercise

How I play

I love to play with fashion dolls with change able parts and clothing. I also love to play with plush toys. These hobbies lead me to the directions of designing for pretend play and creative play.

0-18 month

POP! The Ball

Age : 0-18 month

Development stage:

5 Sense, Cognitive, Physical development

PlayPattern :

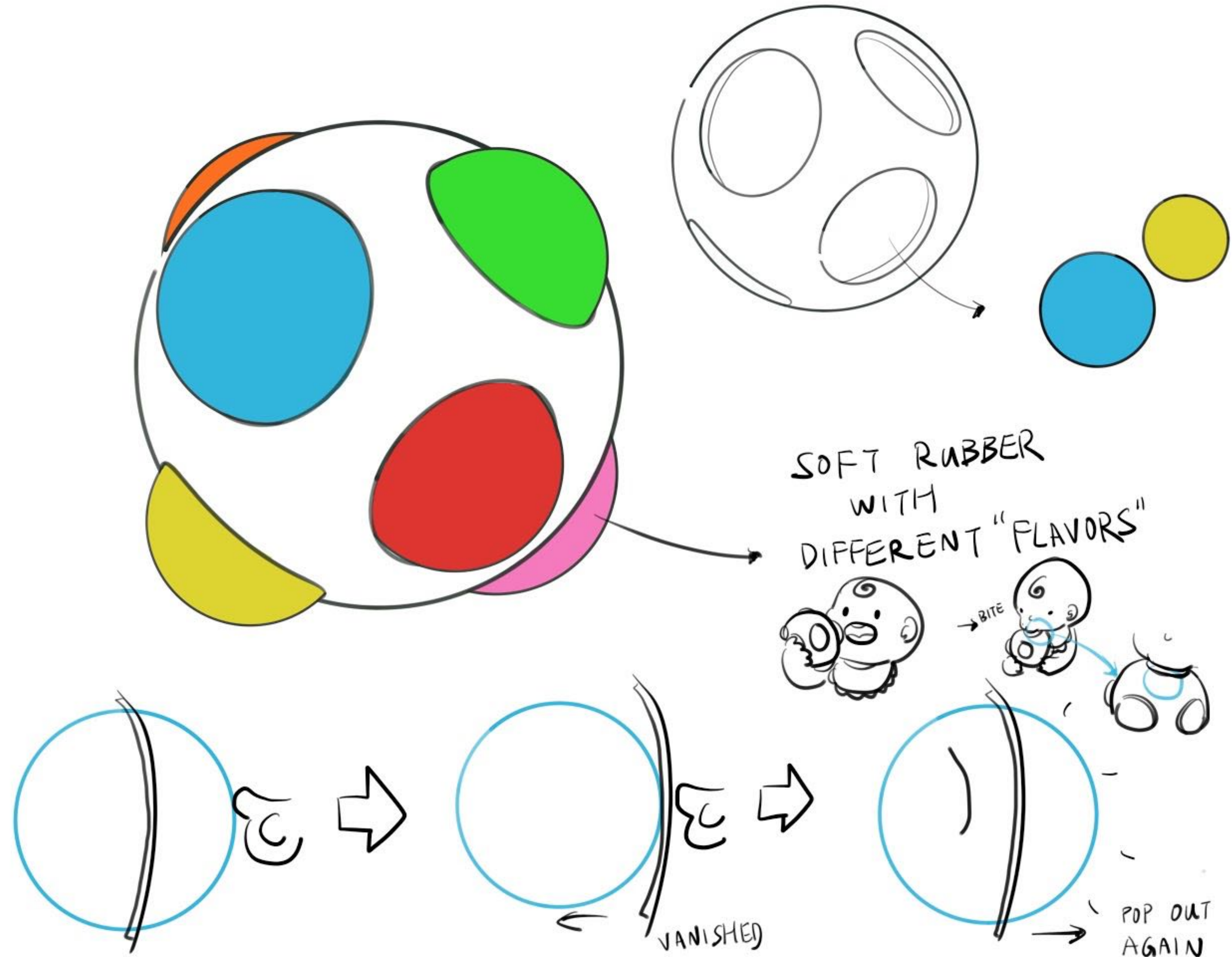
Motor skill and 5 sense development;
Active play

How it works:

This is the toy for baby to develop their basic sense. Each small ball has different color and smell. When baby trying to grab or chew on the small ball, it will shrink back and 'vanished', create a cause and effect result when play. Safe for baby to grab, poke, and even bite or lick on it

Material:

Silicone



Ducky Family

Age : 0-18 month

Development stage:

Emotional, Physical, Cognitive development

PlayPattern :

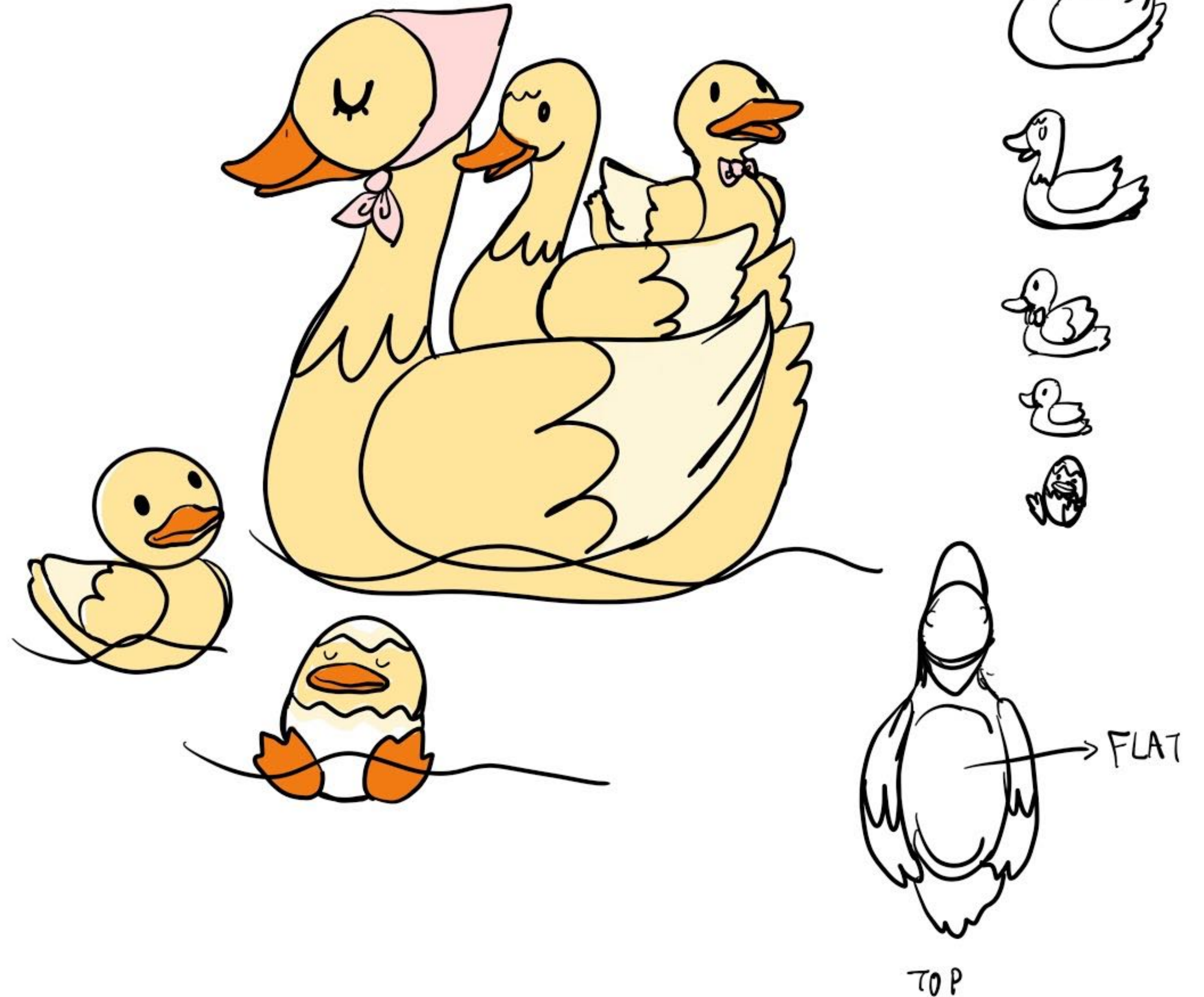
Motor skill development, constructive play, pretend play

How it works:

This is the bath toy for baby to build their Emotional, Physical, and Cognitive development, while having a fun stacking game when taking the bath.

Material:

Rubber



18 month - 3+

Tree Guardians

Age : 18 month-3

Development stage:

Emotional, Cognitive development

PlayPattern :

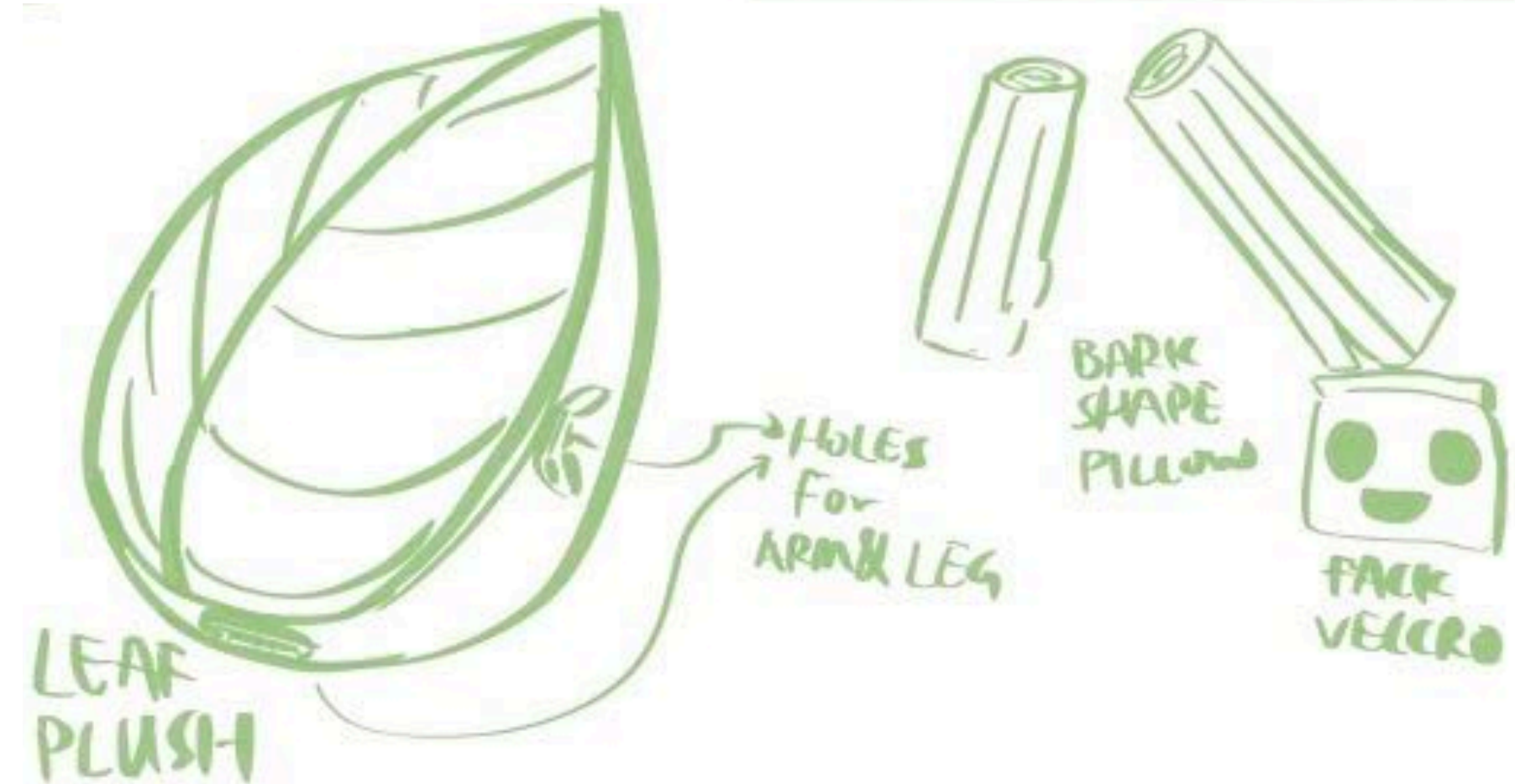
Pretend play for kids to customized and play.

How it works:

Tree Guardians are plush toy Set that allow kids to build their own guardian characters by picking the different body shape, face and bark arm and legs. Creating the pretend play experience.

Material:

Velveteen, Cotton



Cross the river

Age : 1-3 years old

Development stage:

Physical, S&E development.

PlayPattern :

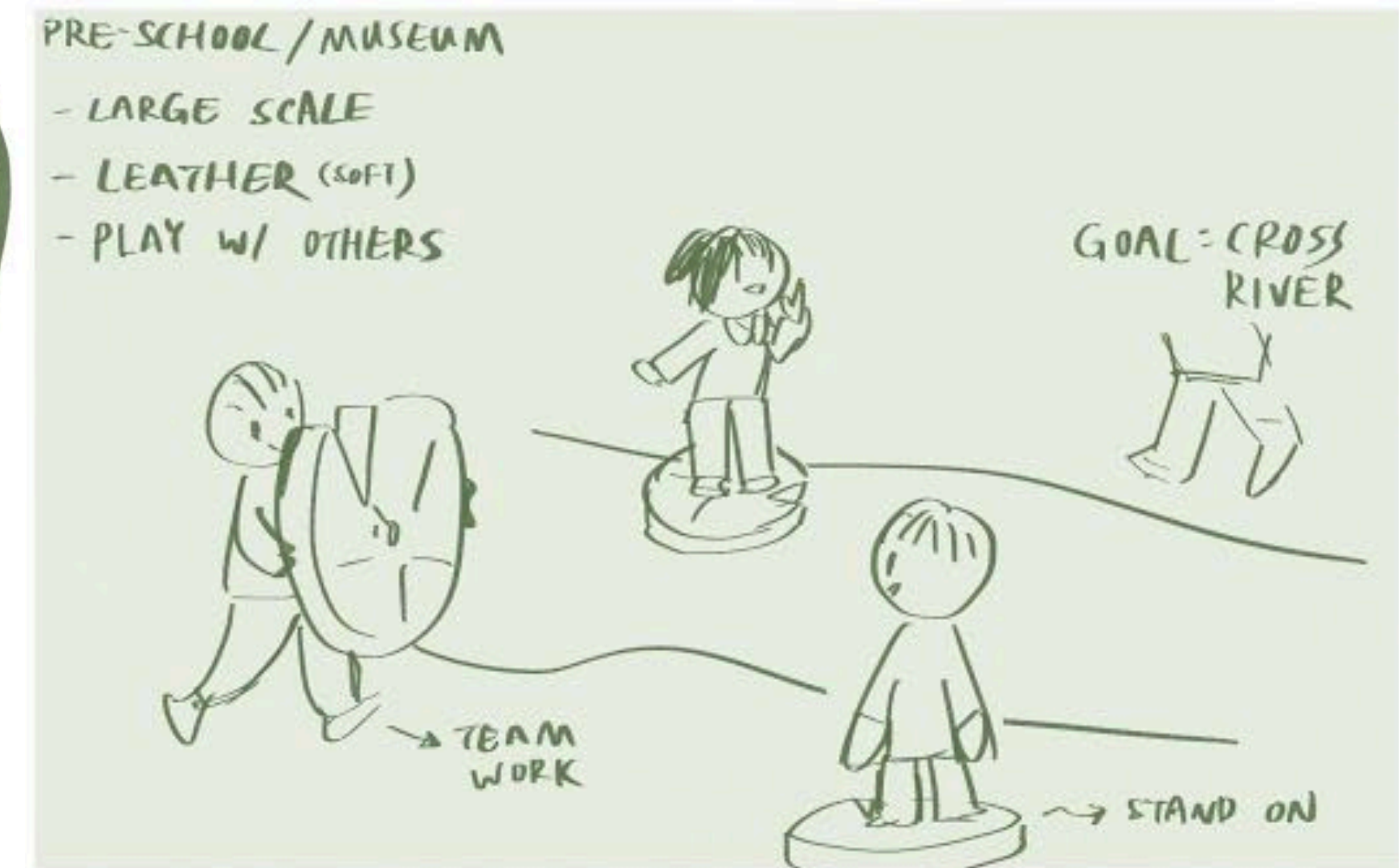
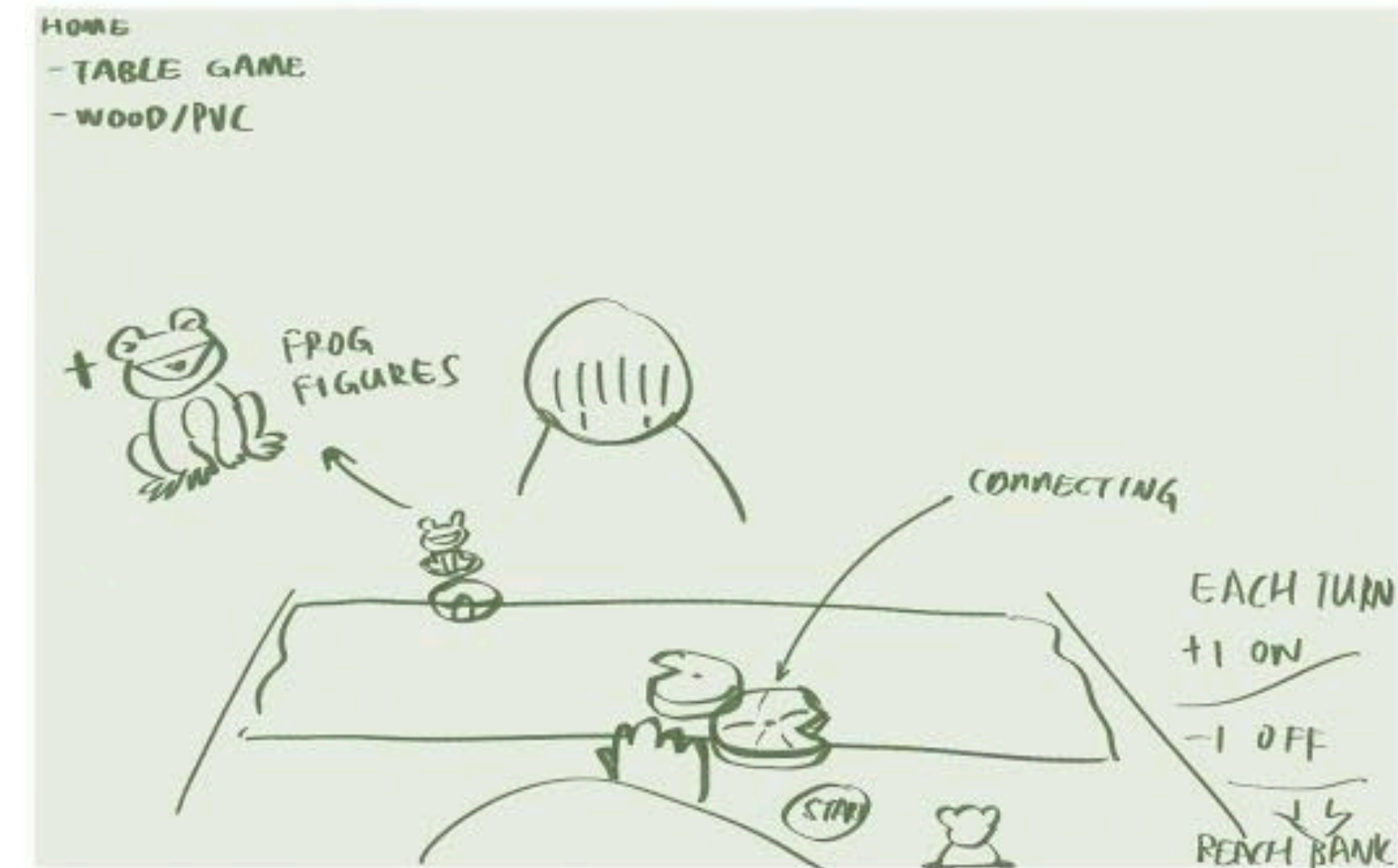
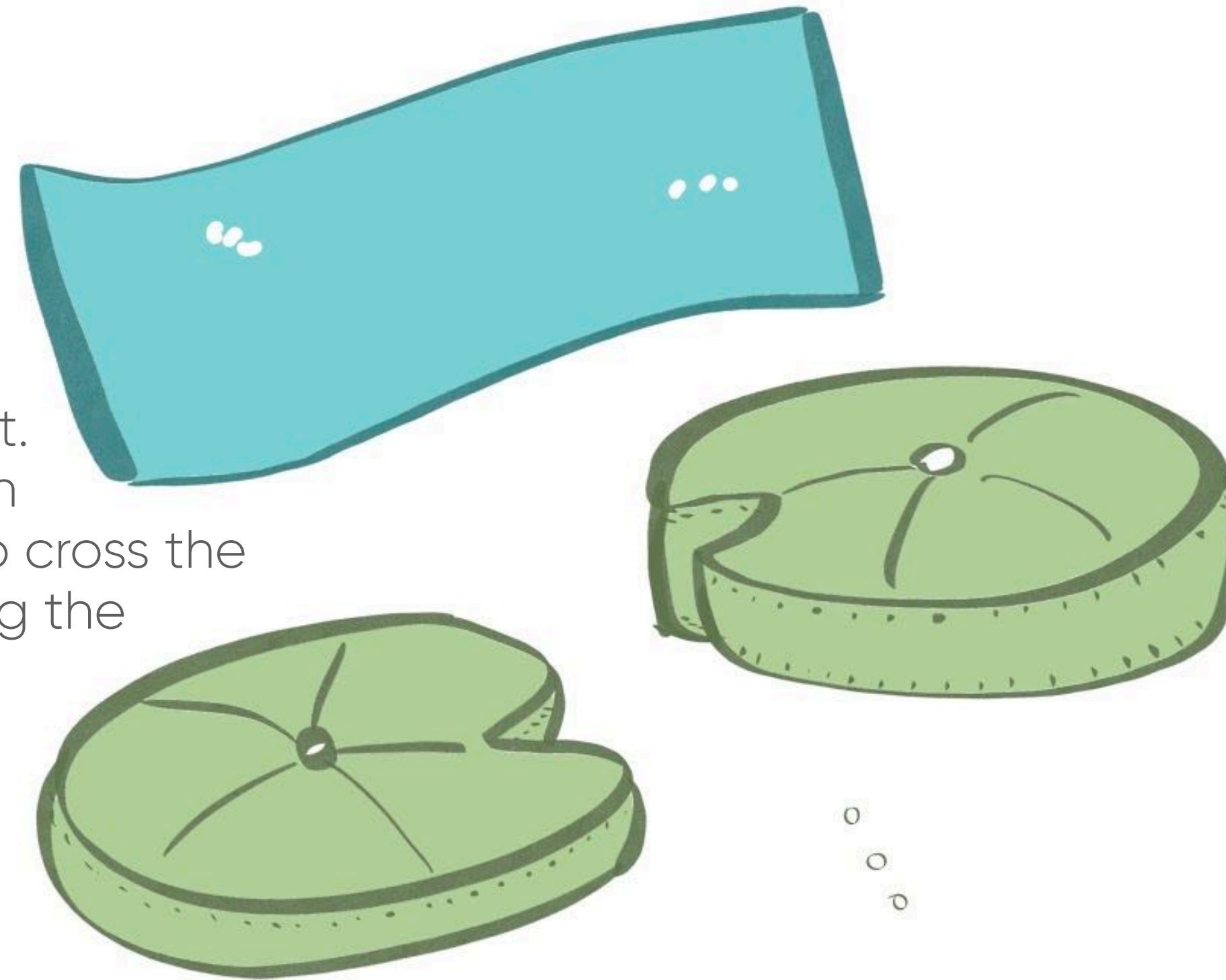
Pretend play and active play

How it works:

A game that designed for teen to build their physical development. The game can play any where with enough space. Kids will pretend to cross the 'river' by helping each other putting the 'Lotus leaf' on to the river

Material:

PU, plaintive, cotton



3-6 years old

Bug the Rescue Team Snow Mountain Ver.

Age : 3-6 years old

Development stage:
S&E development

PlayPattern :

Pretend play, storytelling

How it works:

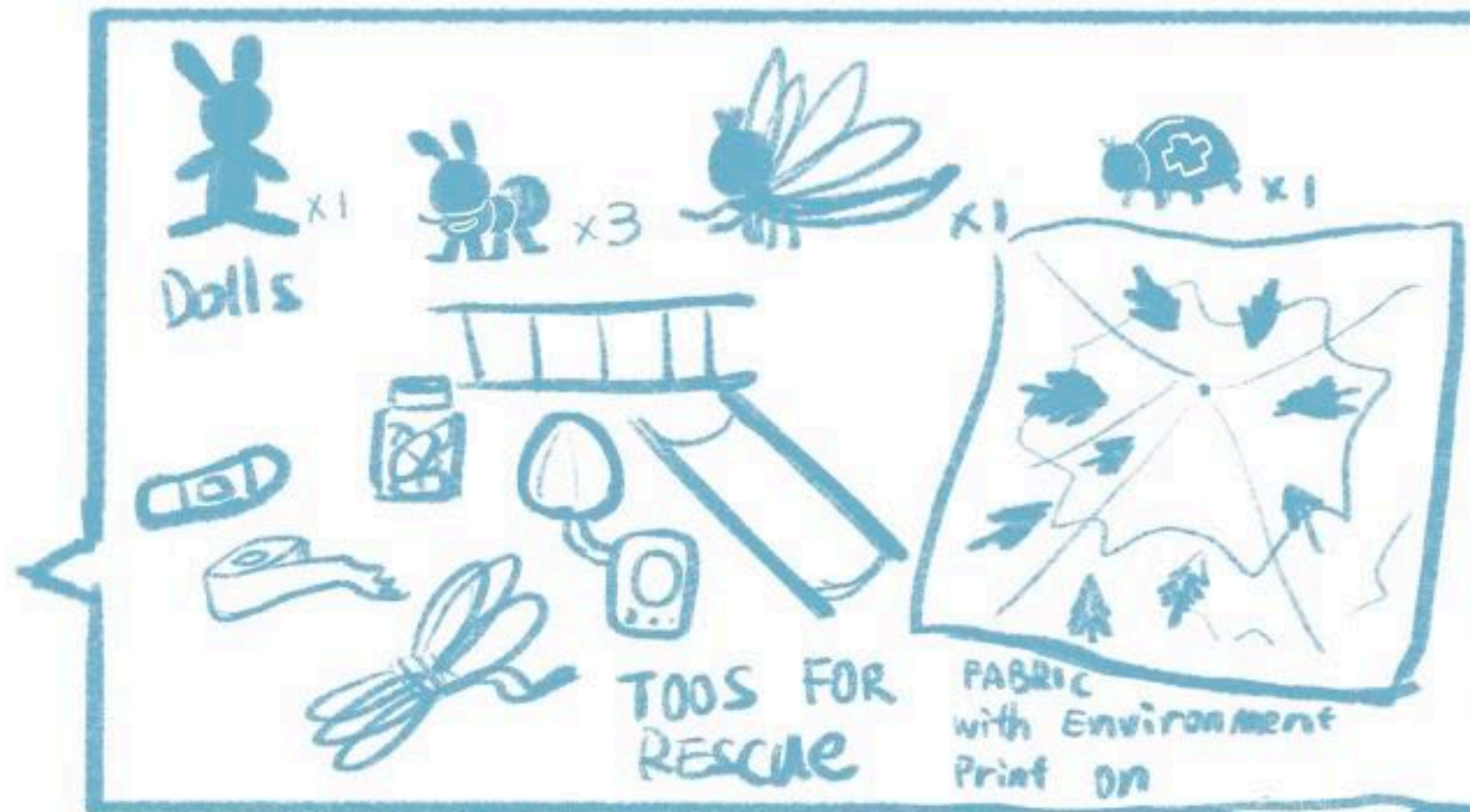
This BRT play set is design for kid that can have a pretend play/ ball-house-like play experience every where in the house. Each character has its own background story and able to provide an open ended play for kid to let them build their own story. With different version of the toy set, kids can even mix the environment together to create an even more exciting play experience.

Material:

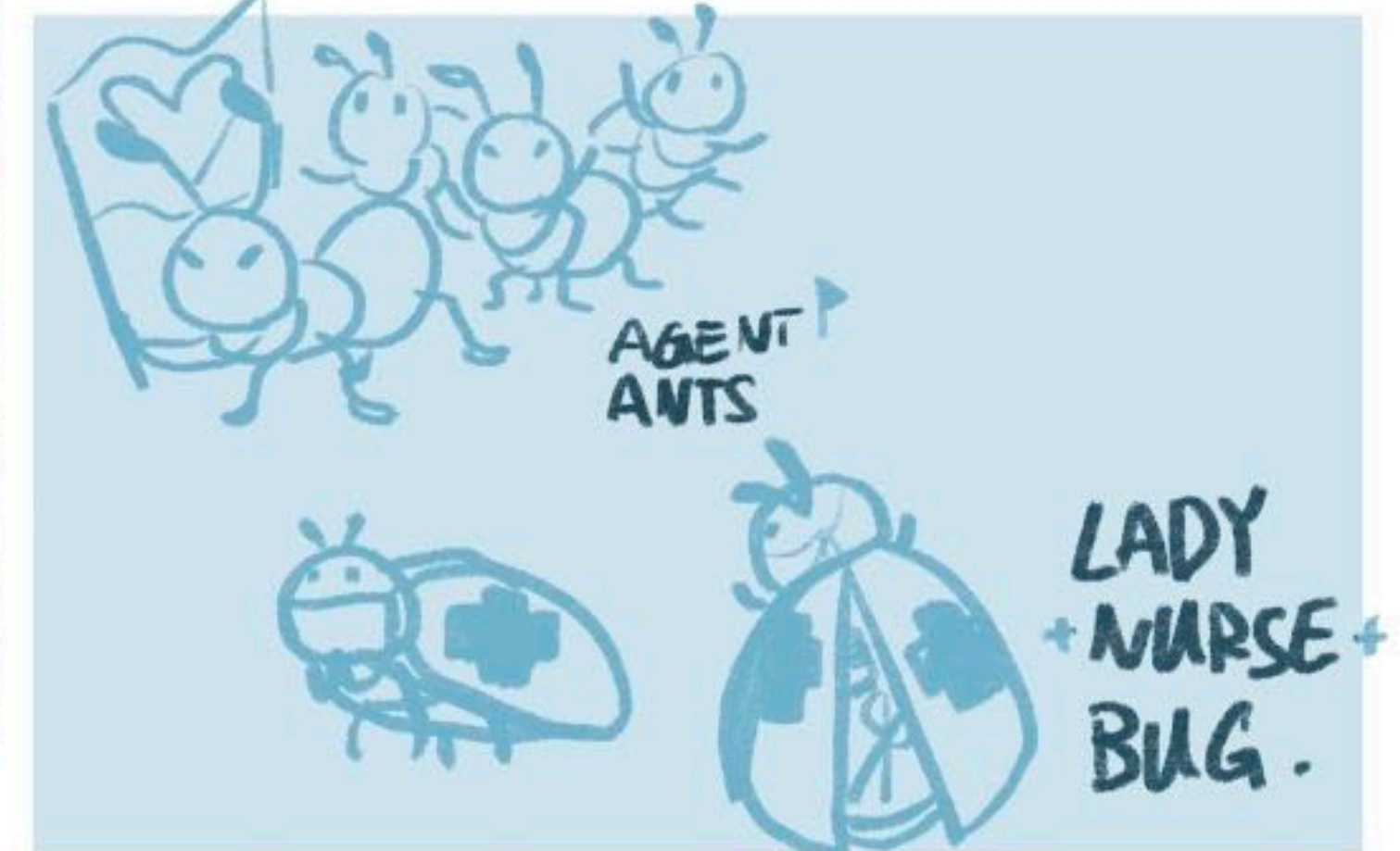
Fabric, plastic, silicon



PACKAGE



WHATS IN SIDE



HOW TO PLAY

Find gaming spot
& put the FABRIC on .



Mini Sewing Lab

Age : 4-6 years old

Development stage:

Physical development

PlayPattern :

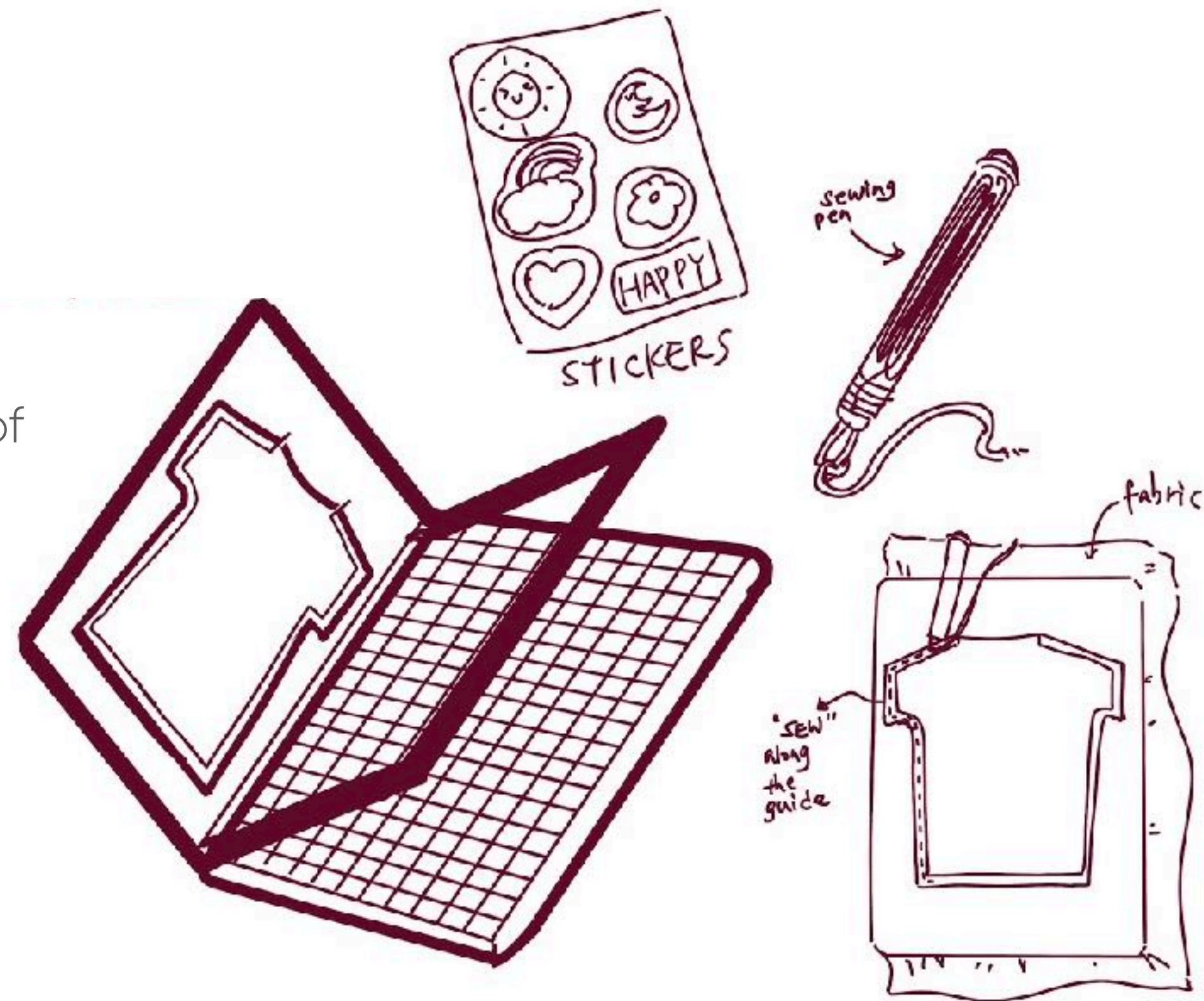
Motor skill development, creative play, pretend play.

How it works:

This is a safe sewing set for kids to learn sewing skills and develop their motor skill ignorer to handle more detail tasks. Kids can follow the guide to sew different type of cloth then use the result to decorate their own favourite doll.

Material:

Plastic, metal, paper, wool/string.



7-10 years old

White Space

Age : 7-10 years old

Development stage:

Physical, S&E development

PlayPattern :

Active play, adventure play, open ended play, constructive play.

How it works:

This is an adventure playground that only contains white pollution landfill, or other abandoned object that are in white color. Kids will have a free, open ended adventure play experience while have this visual impact. Other iterations might be different color theme of adventure playground.

Material:

Random landfills.



Adventure Watch

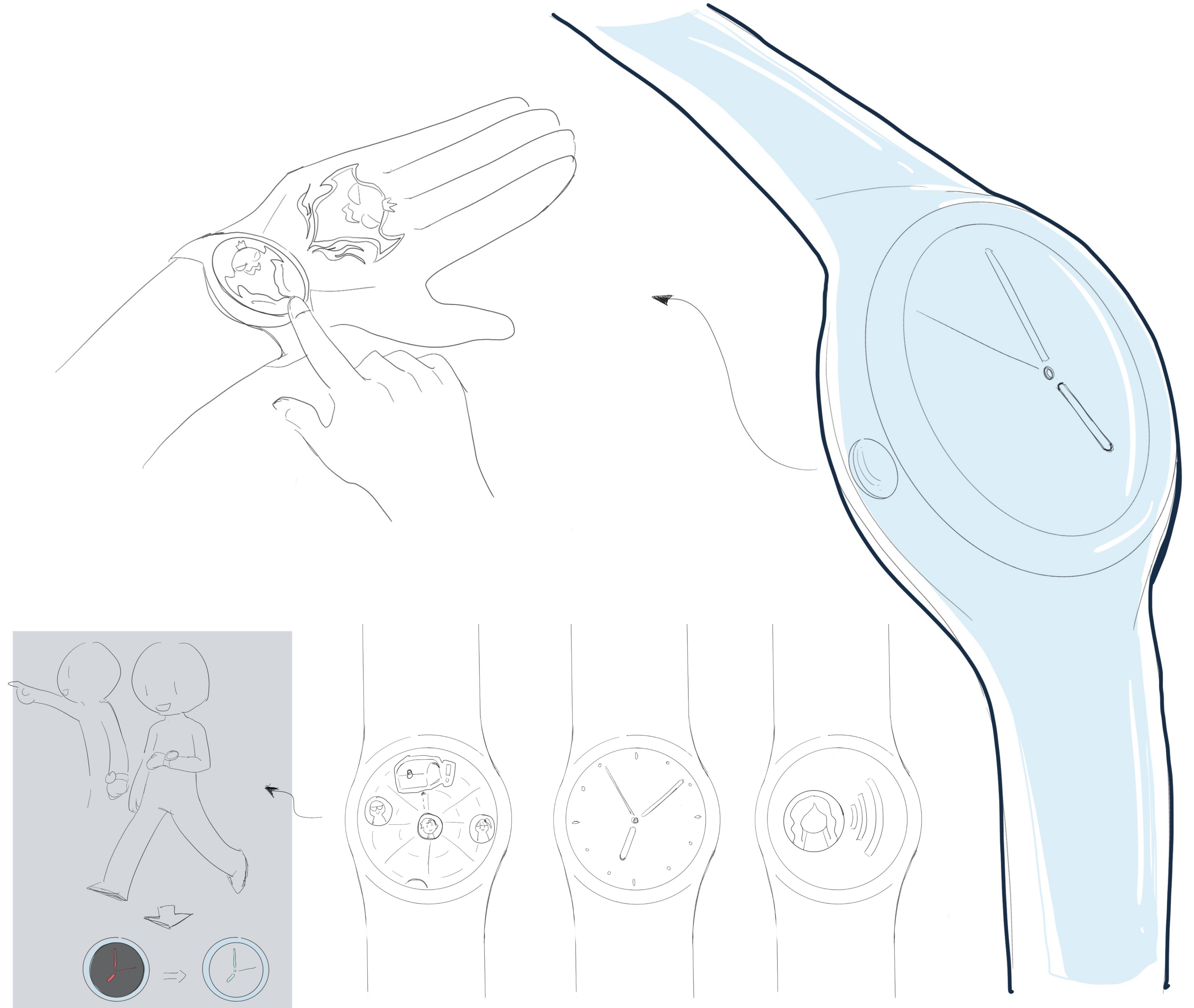
Age : 7-10 years old

Development stage:
Physical S&E development

PlayPattern :
Active, creative Play.

How it works:
Besides working as a regular watch and teaching the time concept to kids. This watch can create an active play by having this 'GPS' treasure finding game embedded in. Kids can also create their own digital tattoo and projected on to their hand. It also have the Emergency Contact feature to keep the kids in safe.

Material:
Silicone, electronic component.



10-14 years old

Sleepaw

Age : 10-18+ years old

Development stage:
S&E development

PlayPattern :

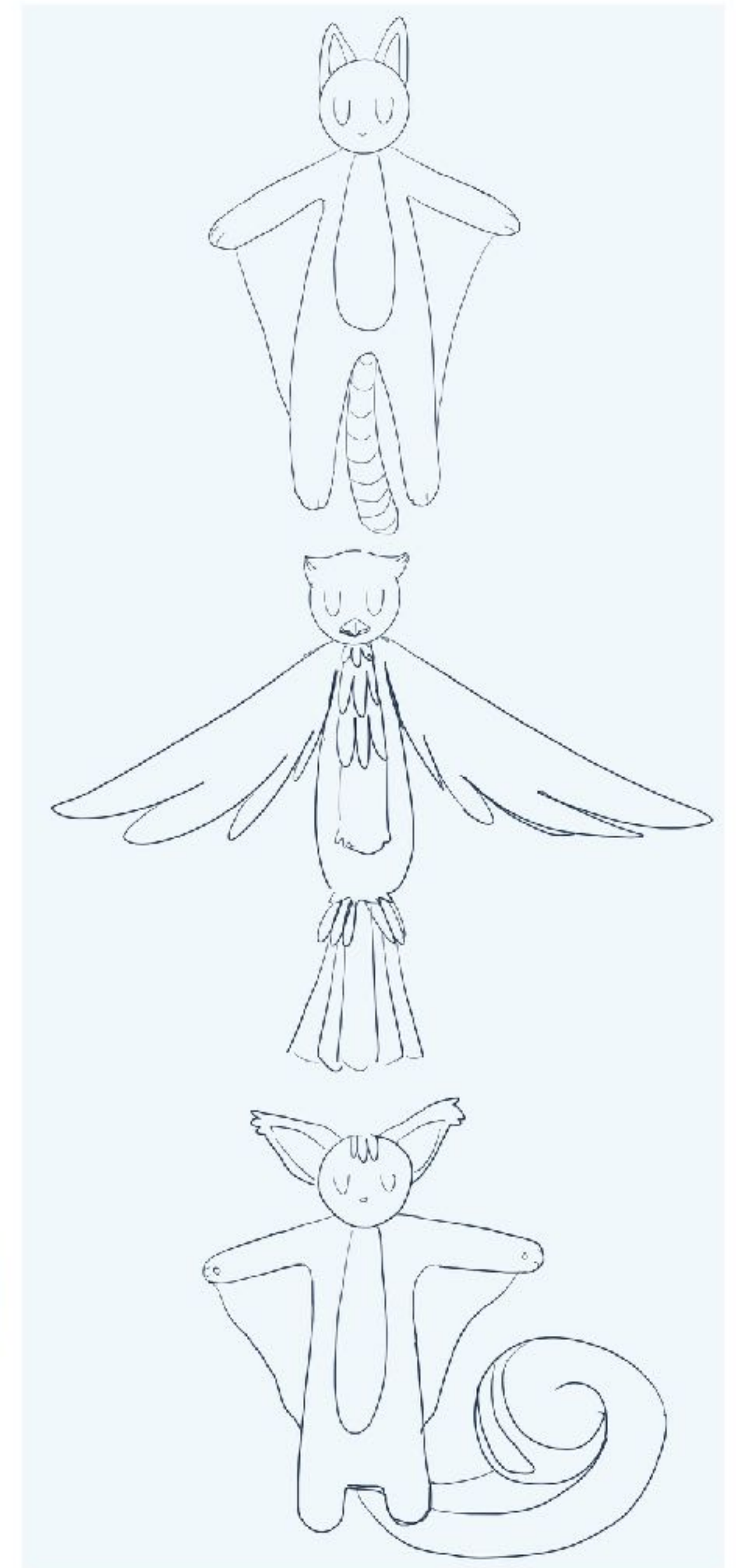
Pretend play.

How it works:

This is a collectable plush toy that can give user free hug and the safety feeling during night with its blanket on the arms and big size

Material:

Fabric, cotton



Surrounding Note

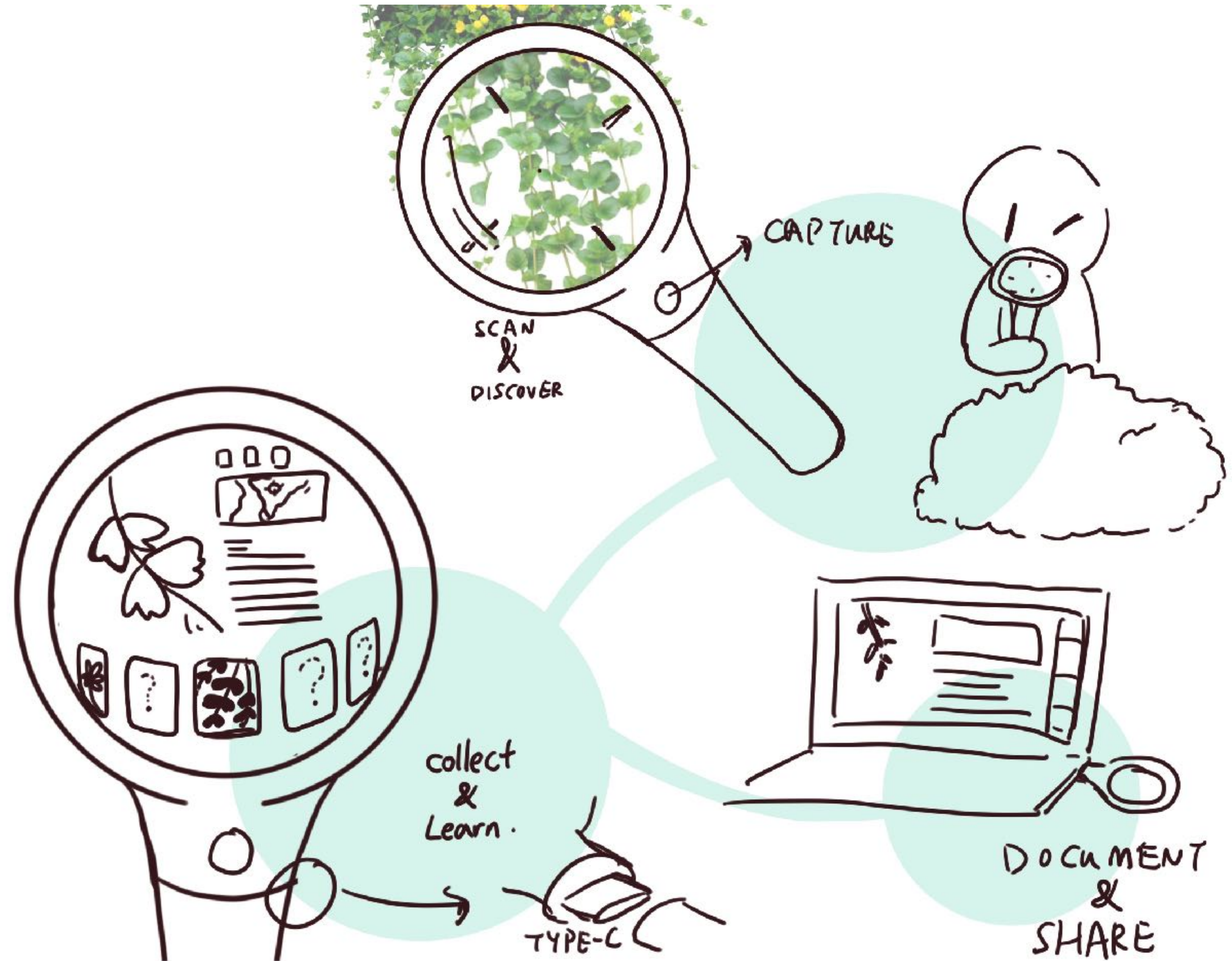
Age : 10-14 years old

Development stage:
Cognitive development

PlayPattern :
Edutainment.

How it works:
This is an educational toy for kids to discover natures around them in the real life, document what they found and study more into it by upload it into the website.

Material:
Electronic component, glass, metal, silicon, plastic.



14-18 years old

Shadow game

Age : 14- ~ years old

Development stage:
Physical Play

PlayPattern :

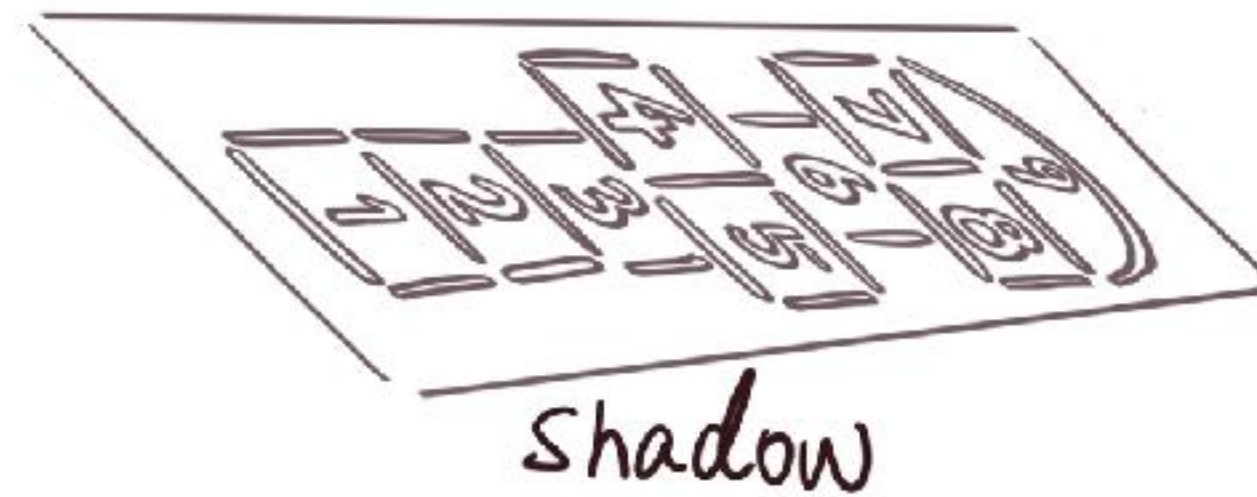
Active pop-up play.

How it works:

By redesign the bus stop, it can provide an active play with the shadow it projected on the ground. It allows the people who waited for bus to have a fun experience by playing with shadows.

Material:

Metal, Plastic.



Jelly Splash

Age : 10-18+ years old

Development stage:
Physical and social development

PlayPattern :

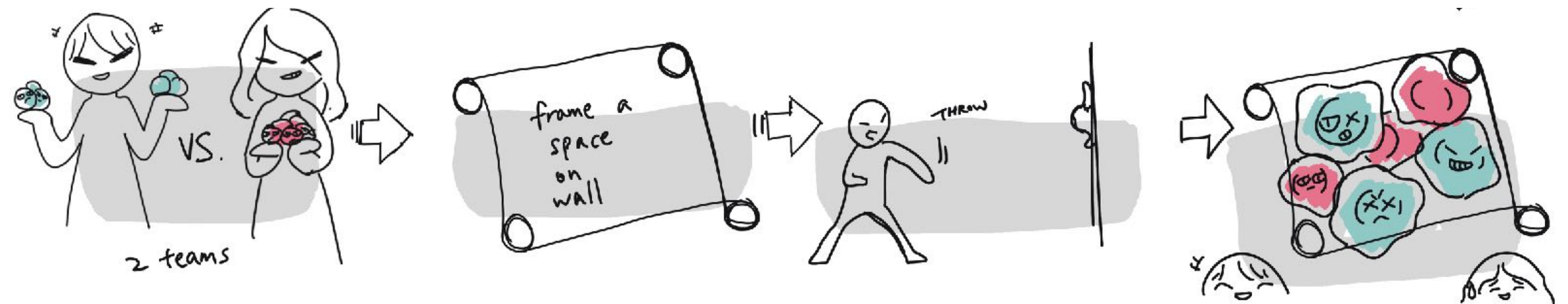
Active Play.

How it works:

This is a game that can be play within family or a group of people.

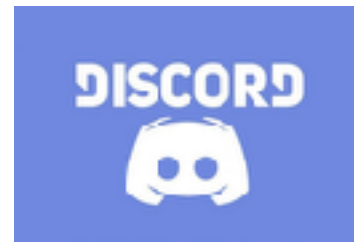
Material:

Rubber, Silicone, propolis



18+ years old

Visual Chat Station X



Age : 16 -18+ years old

Development stage:

S&E development

PlayPattern :

Pretend play and visual chatting function.

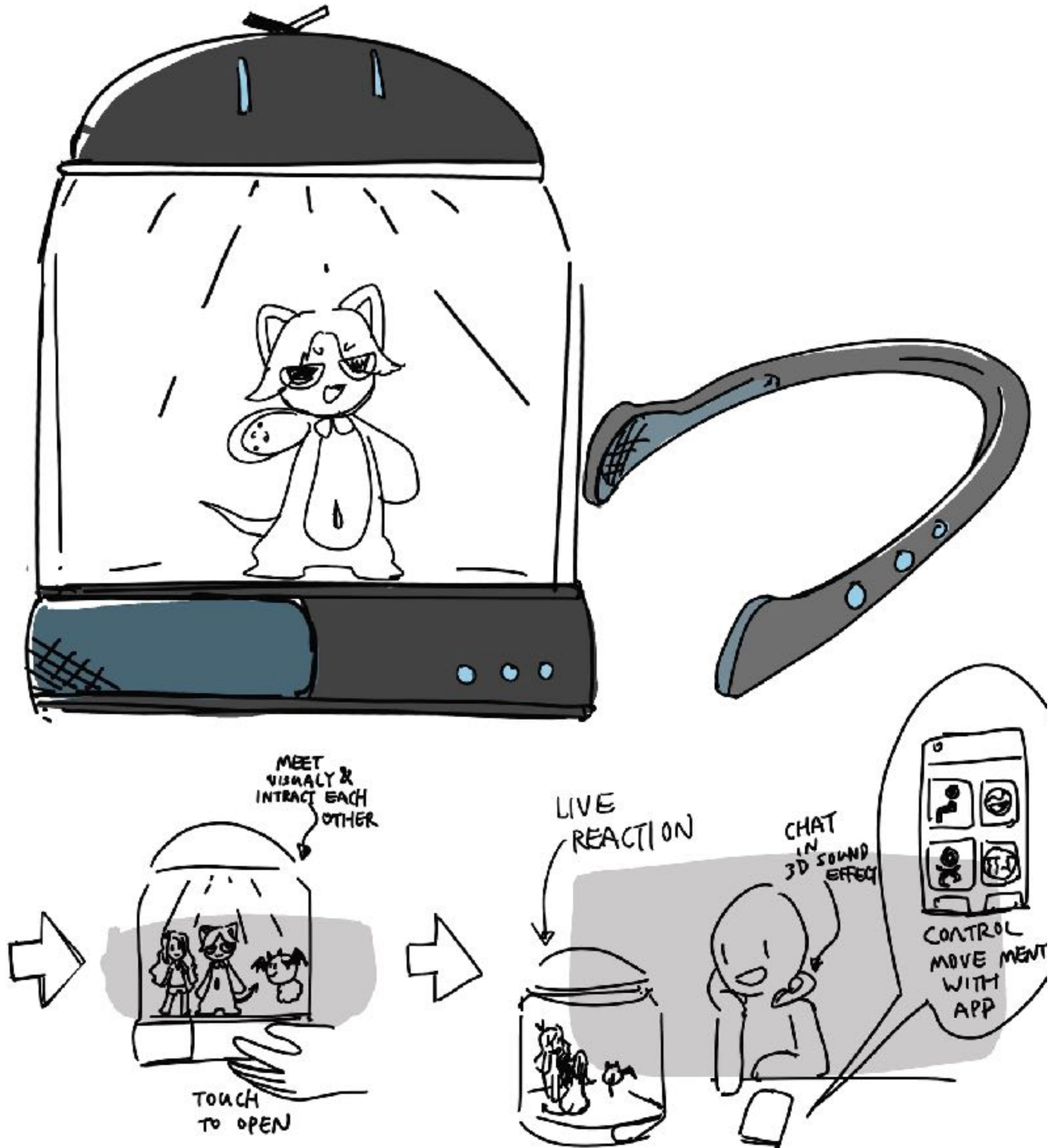
How it works:

Connect this chat station with your discord. Creating your own 3d character and join the voice chat with your character act actively in every body's chat station.

With the supported headphone set, you can even feel character waking and talking around. Remove the distance between everybody especial in this pandemic situation.

Material:

Glass, Acrylic, Fabric , rubber, metal LED, Electronic Component



Guardian Lion Stamp X



Age : 18+ years old

Development stage:
S&E development

PlayPattern :

Play in office

How it works:

This is a squeezing toy to use inside office as a stamp. By squeezing the character part, it releases the stress of working and becomes an adorable decoration piece on the table.

Material:

Rubber, silicon, Metal, ink pad

